

Incremental Epic Fact Sheet

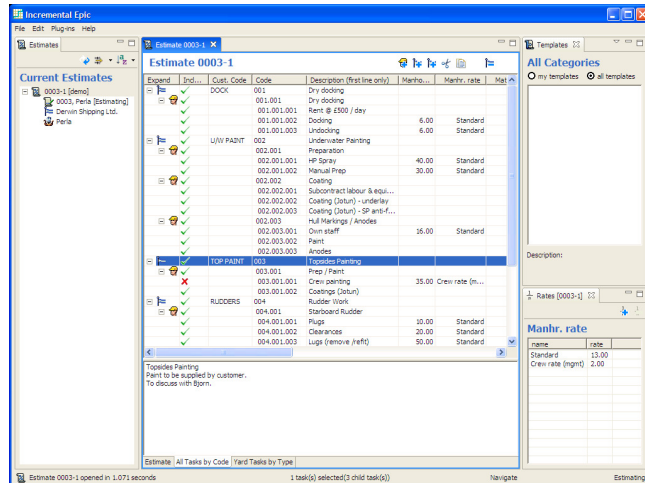
Estimating

This fact sheet explains how Incremental Epic can support estimating in your shipyard.

Estimate Creation

Incremental Epic includes a dedicated plug-in for estimate creation. This offers a spreadsheet-style interface with advanced features such as task hierarchies, group by order or by type, drag'n'drop templates, global costs & rates, automatic adjustment columns and export to formats such as Microsoft Excel®.

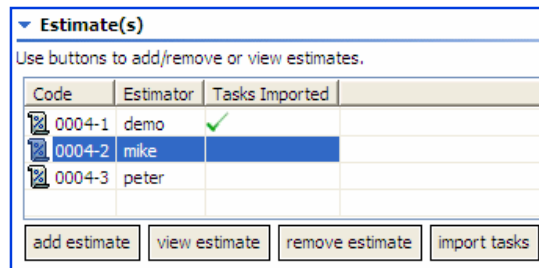
This interface is extremely flexible and can be customised for an estimator or a specific contract.



Storage and Retrieval of Estimates

Incremental Epic can record any number of estimates for an enquiry or a contract. It stores both *internal* estimates – those created using its own estimating plug-in and *external* estimates – estimates created independently of Epic using a spreadsheet..

External estimates are recorded as documents attached to estimate records, and accessed via a single mouse-click.



multiple estimates for a contract

Comparison of Estimated and Actual Costs

Incremental Epic can use estimates directly to produce contract work lists. It uses an *import* process to extract all the estimate information, which then allows production staff to instantly compare estimated and actual costs:

| Task | Code | Description | Est. Mhrs | Total Mhrs | Est. Purchases | Purchases Total | Est. Subcontracts | Subcontracts Total | Ongoing Alerts |
|------|-----------|--------------------|-----------|------------|----------------|-----------------|-------------------|--------------------|------------------------------|
| 001 | | Docking & Services | | 4 | £0.00 | | £0.00 | | |
| 002 | | Crew Accomodation | 48.00 | 7.75 | £240.00 | | £4200.00 | | |
| 003 | | Anchors & Cables | 108.00 | 91.75 | £1100.00 | £1038.11 | £0.00 | £1620.00 | |
| | * 003.001 | Present for survey | 78.00 | 60.5 | £0.00 | | £0.00 | £1620.00 | |
| | * 003.002 | Chain lockers | 20.00 | 21.25 | £800.00 | £740.11 | £0.00 | | |
| | * 003.003 | Hull Anodes | 10.00 | 10 | £300.00 | £298.00 | £0.00 | | |
| 004 | | Bow Thruster | 34.00 | | £220.00 | | £0.00 | | 1. manhours exceed estimated |

estimated and actual costs for contract tasks

The import process is built-in for internal estimates, and requires a customised plug-in for external estimates. A similar mechanism is used to allow estimates for emergent work to be incorporated into a contract.

Other relevant fact sheets : [Integrating With Other Systems](#)
[Plug-ins](#)
[Project Management](#)