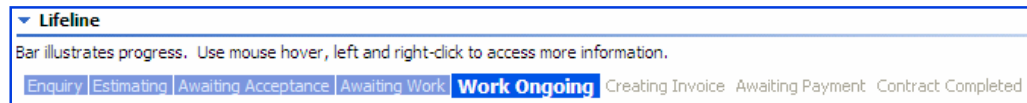


Incremental Epic Fact Sheet Project Management

Incremental Epic is a production focused system, and project management lies at its heart. This fact sheet discusses the functionality provided by Epic for project managers.

Project management in Epic covers a broader range of functions than the general meaning. Epic treats any engagement with a customer as a *project*, progressing this through a *lifeline* that is displayed in the project editor:



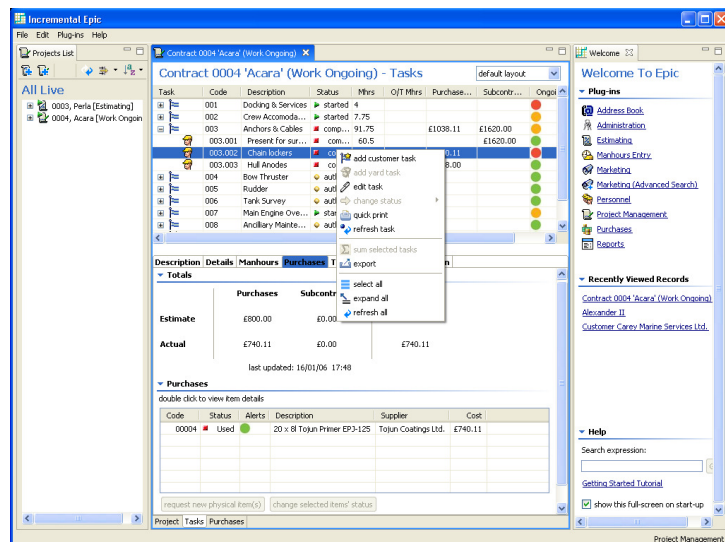
lifeline in project editor

A project may end when an enquiry is declined, when an estimate is rejected, when an invoice is paid, or if the project is cancelled for some reason. Throughout, Epic captures the information needed for running and reviewing the project.

Once work starts, the management of the project's constituent *tasks* is included.

Incremental Epic provides a fast, focussed interface through which managers can quickly review and control on-going work. This interface integrates with estimating, purchasing and invoicing functionality. The aim is to minimise the administrative overhead and to show instant production-relevant information.

Several features are included to support this aim:



project management screen

- estimated costs are directly comparable with actual costs;
- a choice of mechanisms are available to monitor labour:
 - o manhours;
 - o direct labour costs;
 - o notional labour costs (based on configurable labour rates);
 - o effective labour rates;
- tasks can be grouped and filtered, and costs for any subset instantly calculated;
- the system can automatically highlight areas of concern through configurable *alerts*;
- automated creation of documents such as work orders and work lists;
- integration with planning tools;
- instant despatching of purchase requests;
- prices are calculated on-the-fly with running invoices available at any point.

Other relevant fact sheets : [Estimating](#)
[Invoice Generation](#)
[Planning](#)